



INTECH

world
wide GmbH

PRODUCT PORTFOLIO

 Edition 2024 / 2025



VERSATILE AND DIRECT FROM MANUFACTURER OUR PORTFOLIO

Since 2008, Intech Worldwide GmbH has been successfully producing plastic transport packaging. Family-owned with a background in the food industry, Intech develops and produces crates and pallets using injection moulding processes. Furthermore, Intech has thermoforming lines to produce precision industrial parts.

Intech offers you a versatile range of crates and pallets for use in storage and transport as well as on automated material handling systems.

We meet the European packaging guidelines and all hygiene requirements for the food industry.

When it comes to individually labelling and marking the crates and pallets, we offer

our customers a wide variety of solutions as well as a large range of colours.

Intech has its very own company fleet and large warehouse space, which guarantees that we are flexible and always ready to deliver.

If you do not find a suitable solution from among our many crates and pallets, our construction team will develop a custom solution together with you. The Intech tool makers will quickly meet your requirements.

Please do not hesitate to get in touch, we are happy to help.

Yours, the Intech-Team

Hanover headquarters (new building 2023)



INTECH GREEN
Page 4-5



**HYGIENIC
PALLETES**
Page 6



**MEDIUM
PALLETES**
Page 7-17



**LIGHT
PALLETES**
Page 18-27



MEAT
Page 28-33



BAKED GOODS
Page 34-35



AGRICULTURE
Page 36-39



INDUSTRY
Page 40



RETAIL
Page 42-45



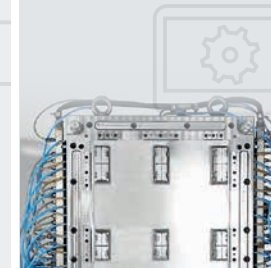
BEVERAGES
Page 46-47



**THERMO-
FORMING**
Page 48



**DEVELOPMENT &
TOOL MAKING**
Page 50-51



**FINISHING &
IDENTIFICATION**
Page 52-53



**STORAGE &
SHIPPING**
Page 54



SHIPPING FOOD
Page 55



WE ARE SUSTAINABLE!

CO₂ FOOTPRINT

Environmental awareness is growing, and climate change is accelerating this positive trend. This awareness is focused on reducing CO₂ emissions.

A CO₂ footprint or carbon footprint is a way to measure emissions of CO₂ due to the consumption of fossil fuels in the areas of transportation, power generation, heat production, traffic, and consumption.

Contrary to common assumptions, plastic pallets achieve better results than their wooden counterparts from an ecological standpoint. The difference is even more clear if we compare our reusable containers with disposable packaging.



Thanks to the significantly longer service life of plastic pallets and reusable containers, they do not need to be replaced as often. This is a positive circumstance as well as the possibility to reduce the volume of these transport packaging (folding, collapsing & nesting) means fewer transports. In addition, it can be recycled more easily and is lighter weight. **All of these factors help significantly reduce emissions.**

Intech also produces green power! Our photovoltaic system delivers over 740 kWp (kilowatt peak). We use solar energy to produce reusable packaging. **This is a climate-friendly approach, and our path to an ecological future.**

PLASTIC PALLETS vs. EURO PALLETS

Sustainability and service life advantages and disadvantages



Plastic pallet



Euro pallet

Service life	23-26 rotations (Medium pallet Multi-Line) approx. 3-4 years	10-13 rotations approx. 1-2 years
CO ₂ footprint	50 % smaller than Euro pallets	
Loss rate	60 % lower than Euro pallets	
Recycling rate 100 % (pallet return & material tempering)	✓	✗
Produced from 100 % PCR plastic (100 % recycled material)	✓	✗
Consistent quality (maintenance and repair free)	✓	✗
Unit weight	constant	20-24 kg (depending on moisture)
Mold, wetness, splinters, rusty nails	impossible	common

CIRCULAR ECONOMY



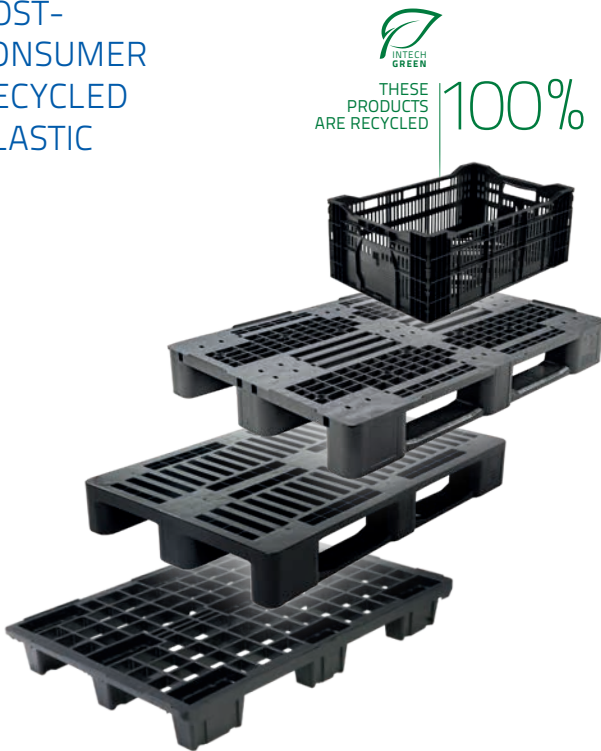
RECYCLE INSTEAD OF DISPOSING

With our sustainability program "Intech Green," we commit to using high-quality recycled materials made of 100 % PCR plastics. Post-consumer recycled materials (PCR) are plastics re-processed from household or commercial waste, the majority of which come from packaging. Intech processes over 10,000 tons of these materials each year, giving

these valuable raw materials a new life. At the end of their service life, we take back containers and pallets, recycle their materials once again, and close the cycle. **Our recycling rate is 100 % – fully in line with the concept of the circular economy.**

THE PCR CYCLE

POST-CONSUMER RECYCLED PLASTIC



REUSABLE, NOT DISPOSABLE

Our reusable transport packaging items are durable, reusable for many years and will be 100 % recycled at the end of their life-circles.

They replace disposable packaging like cardboards or plastic films in a climate-friendly manner and improving the CO₂ balance for the long-term.



HYGIENIC PALLETS

HYGIENIC PLASTIC PALLETS

Hygienic pallets from Intech are primarily used in industries with mandatory hygienic storage and transportation conditions. Thanks to their standardized exterior dimensions of 1,200 x 800 mm, hygienic pallets made of plastic are ideal for combining with standardized stacking containers. They are lightweight, yet robust and resilient.



Hygiene pallet EURO H1 (corresponds to DIN 55423-5 / DIN 55423-6)

External dimensions:	1,200 x 800 x 160 mm (L x W x H)
Load capacity:	1,250 kg dynamic / 5,000 kg static / 1,000 kg high rack
Version:	3 runners welded
Unit weight:	18.0 kg
Material:	HD-PE virgin
Colour:	grey
Options:	with or without perimetric rims with or without central rims central runner completely closed alternative colours on request



MEDIUM PALLETS

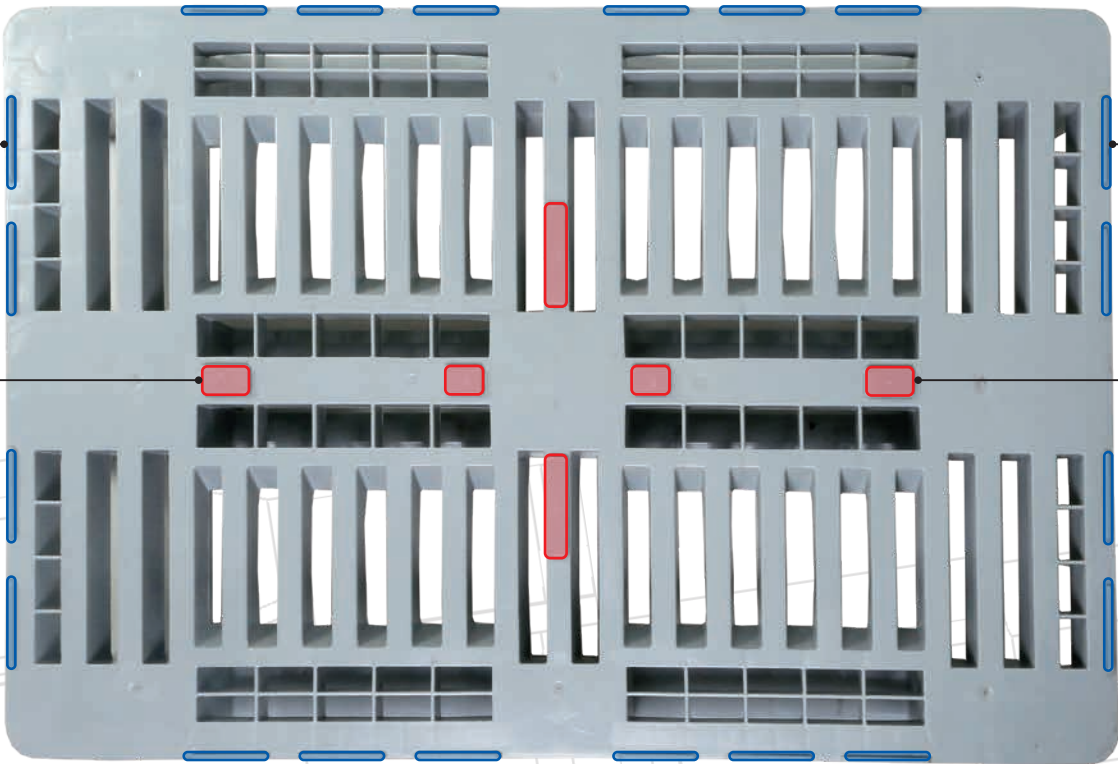
MEDIUM PALLET BLACK LINE



One key advantage of plastic pallets from Intech is that they are easy to clean. Moisture cannot be absorbed by the pallet, thereby preventing the accumulation of germs and bacteria. Because they are resistant to heat and cold, Intech plastic pallets can be used in a wide range of industries.

Medium pallet Black-Line

External dimensions:	1,200 x 800 x 155 mm (L x W x H)
Load capacity:	1,250 kg dynamic / 5,000 kg static / 650 kg high rack (unwelded) 800 kg high rack (runners welded)
Version:	3 runners unwelded
Unit weight:	18.0 kg with welded runners / 16.0 kg unwelded
Material:	HD-PE regranulate
Colour:	black
Options:	with welded runners with or without perimetric rims with or without central rims central runner completely closed



with or without
perimetric rims available

with or without
central rims available

with or without
perimetric rims available

with or without
central rims available

MEDIUM PALLETS

MEDIUM PALLET SERIES MULTI-LINE

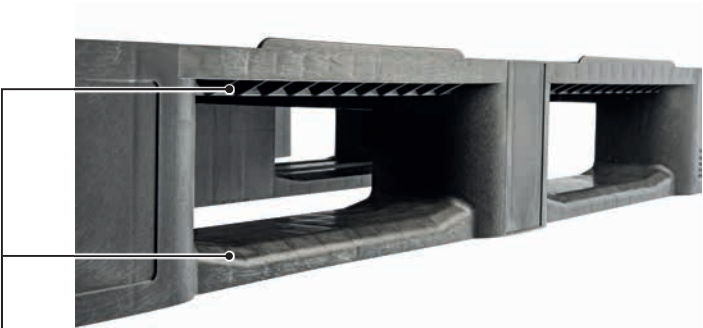
Medium pallets are robust all-rounders. Thanks to the many available options, our Multi-Line medium pallet series is versatile and multifunctional, with a load capacity that falls between our light and hygienic pallets. The Intech Multi-Line is suitable for global exports and with steel reinforcements optimally equipped for use in high-bay warehouses.

The gridded multiple openings on the upper deck can be used to set up displays or to attach plastic wedges for load securing.



Great design – Your benefits

- Recessed protective windows for printing and labeling
- With 4 corner elements to fix packaging films
- Chamfered edges on all four sides of the deck and on the runners guarantee perfect handling with industrial trucks
- Rounded edges reduce the risk of damage
- Can be equipped with RFID transponders

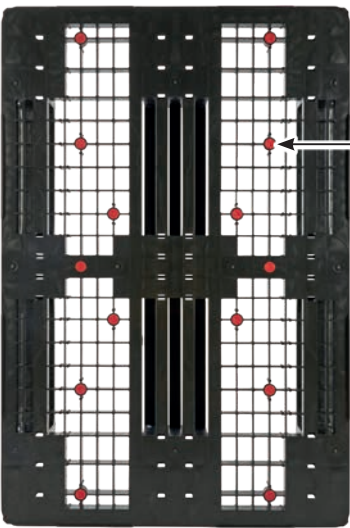


Multifunctional – Your options

- With or without safety rims (7 mm or 22 mm)
- Two-sided rubber blocks running from the top of the deck to the bottom of the deck to prevent slippage on industrial trucks
- Corrosion-free steel bars in the pallet deck (2, 3 or 4 pieces) for a load capacity up to 1,450 kg in high racks
- 2 or 3 runners (closed deck versions)
- EURO or ISO format
- Double rims for ring attachment (foldable large load carrier)
- Plastic wedges for load securing

Medium pallet Multi-Line ML800

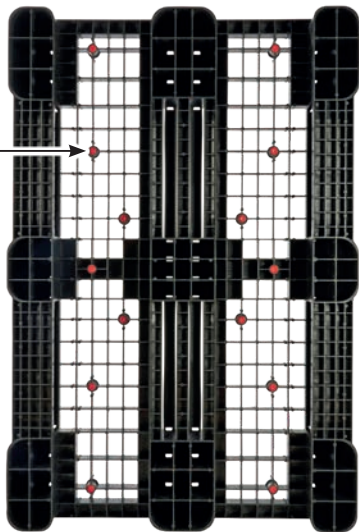
Item no.:	ML-OD-12080-10
External dimensions:	1,200 x 800 x 145 mm (L x W x H)
Load capacity:	1,300 kg dynamic / 5,000 kg static / 550 kg high rack
Version:	3 runners unwelded, open deck
Temperature range:	-40 °C to +70 °C
Unit weight:	11.0 kg
Material:	HD-PE regranulate / HD-PE virgin (grey)
Colour:	black or grey
Options:	with or without safety rims (7 mm or 22 mm) rubber blocks for anti-slipping, two-sided (top and bottom of the deck, up to 14 pieces, 8 short, 6 long) corrosion-free steel bars in the pallet deck (2, 3 or 4 pieces) double rims for ring attachment (foldable large load carrier) plastic wedges for load securing RFID transponder



Top of the deck

Medium pallet Multi-Line ML800 S4

Item no.:	ML-OD-12080-10-4S
External dimensions:	1,200 x 800 x 145 mm (L x W x H)
Load capacity:	1,600 kg dynamic / 7,000 kg static / 1,300 kg high rack
Version:	3 runners unwelded, open deck, 4 steel bars
Temperature range:	-40 °C to +70 °C
Unit weight:	13.7 kg
Material:	HD-PE regranulate / HD-PE virgin (grey)
Colour:	black or grey
Options:	with or without safety rims (7 mm or 22 mm) rubber blocks for anti-slipping, two-sided (top and bottom of the deck, up to 14 pieces, 8 short, 6 long) corrosion-free steel bars in the pallet deck (2, 3 or 4 pieces) double rims for ring attachment (foldable large load carrier) plastic wedges for load securing RFID transponder



Bottom of the deck

MEDIUM PALLETS

MEDIUM PALLET SERIES MULTI-LINE

Medium pallet Multi-Line ML800GD 2K

Item no.:	ML-GD-12080-10-2K
External dimensions:	1,200 x 800 x 145 mm (L x W x H)
Load capacity:	1,300 kg dynamic / 5,000 kg static / 550 kg high rack
Version:	2 runners unwelded, closed deck
Temperature range:	-40 °C to +70 °C
Unit weight:	12.5 kg
Material:	HD-PE regranulate / <u>HD-PE virgin (grey)</u>
Colour:	black or grey
Options:	with or without safety rims (7 mm or 22 mm) rubber blocks for anti-slipping, one-sided (bottom of the deck, up to 14 pieces) corrosion-free steel bars in the pallet deck (2 pieces) 2 or 3 runners double rims for ring attachment (foldable large load carrier) plastic wedges for load securing RFID transponder

Medium pallet Multi-Line ML800GD 3K

Item no.:	ML-GD-12080-10-3K
External dimensions:	1,200 x 800 x 145 mm (L x W x H)
Load capacity:	1,500 kg dynamic / 6,000 kg static / 650 kg high rack
Version:	3 runners unwelded, closed deck
Temperature range:	-40 °C to +70 °C
Unit weight:	13.8 kg
Material:	HD-PE regranulate / HD-PE virgin (grey)
Colour:	black or grey
Options:	with or without safety rims (7 mm or 22 mm) rubber blocks for anti-slipping, one-sided (bottom of the deck, up to 14 pieces) corrosion-free steel bars in the pallet deck (2 pieces) 2 or 3 runners double rims for ring attachment (foldable large load carrier) plastic wedges for load securing RFID transponder

MEDIUM PALLETS

MEDIUM PALLET SERIES MULTI-LINE

Medium pallet Multi-Line ML1000

Item no.:	ML-OD-120100-10
External dimensions:	1,200 x 1,000 x 145 mm (L x W x H)
Load capacity:	1,300 kg dynamic / 5,000 kg static / 550 kg high rack
Version:	3 runners unwelded, open deck
Temperature range:	-40 °C to +70 °C
Unit weight:	12.8 kg
Material:	HD-PE regranulate / HD-PE virgin (grey)
Colour:	black or grey
Options:	with or without safety rims (7 mm or 22 mm) rubber blocks for anti-slipping, two-sided (top and bottom of the deck, up to 28 pieces, 16 short, 12 long) corrosion-free steel bars in the pallet deck (2, 3 or 4 pieces) double rims for ring attachment (foldable large load carrier) plastic wedges for load securing RFID transponder

Medium pallet Multi-Line ML1000 S4

Item no.:	ML-OD-120100-10-4S
External dimensions:	1,200 x 1,000 x 145 mm (L x W x H)
Load capacity:	1,600 kg dynamic / 7,000 kg static / 1,300 kg high rack
Version:	3 runners unwelded, open deck, 4 steel bars
Temperature range:	-40 °C to +70 °C
Unit weight:	15.5 kg
Material:	HD-PE regranulate / HD-PE virgin (grey)
Colour:	black or grey
Options:	with or without safety rims (7 mm or 22 mm) rubber blocks for anti-slipping, two-sided (top and bottom of the deck, up to 28 pieces, 16 short, 12 long) corrosion-free steel bars in the pallet deck (2, 3 or 4 pieces) double rims for ring attachment (foldable large load carrier) plastic wedges for load securing RFID transponder

MEDIUM PALLETS

MEDIUM PALLET SERIES MULTI-LINE

Medium pallet Multi-Line ML1000GD 2K

Item no.:	ML-GD-120100-10-2K
External dimensions:	1,200 x 1,000 x 145 mm (L x W x H)
Load capacity:	1,300 kg dynamic / 5,000 kg static / 550 kg high rack
Version:	2 runners unwelded, closed deck
Temperature range:	-40 °C to +70 °C
Unit weight:	14.2 kg
Material:	HD-PE regranulate / <u>HD-PE virgin (grey)</u>
Colour:	black or grey
Options:	with or without safety rims (7 mm or 22 mm) rubber blocks for anti-slipping, one-sided (bottom of the deck, up to 28 pieces) corrosion-free steel bars in the pallet deck (2 pieces) 2 or 3 runners double rims for ring attachment (foldable large load carrier) plastic wedges for load securing RFID transponder

Medium pallet Multi-Line ML1000GD 3K

Item no.:	ML-GD-120100-10-3K
External dimensions:	1,200 x 1,000 x 145 mm (L x W x H)
Load capacity:	1,500 kg dynamic / 6,000 kg static / 650 kg high rack
Version:	3 runners unwelded, closed deck
Temperature range:	-40 °C to +70 °C
Unit weight:	15.5 kg
Material:	HD-PE regranulate / HD-PE virgin (grey)
Colour:	black or grey
Options:	with or without safety rims (7 mm or 22 mm) rubber blocks for anti-slipping, one-sided (bottom of the deck, up to 28 pieces) corrosion-free steel bars in the pallet deck (2 pieces) 2 or 3 runners double rims for ring attachment (foldable large load carrier) plastic wedges for load securing RFID transponder

PALLET EQUIPMENT

PLASTIC WEDGE SYSTEMS FOR PALLETS

From rolls of paper to steel-coils – round cargo or roll goods require specialized solutions for transporting on pallets.

To minimize the risk of accidents, reliable rollaway protection is essential when storing and transporting round materials.

Round cargo is diverse in terms of its length, diameter, and weight, and our robust wedge systems are just as diverse and variable to handle these differing requirements.

We are happy to develop custom-tailored solutions for our customers.



MEDIUM PALLETS

MULTI-BOXES

Our folding large load carriers in the Multi-Line series were developed primarily with the goal of making industrial cargo transport more secure, efficient, and environmentally-friendly.

Thanks to their folding design, our Multi-Boxes have up to 80 % less volume, and can significantly reduce transportation and storage costs.



Intech Multi-Boxes – Your benefits

- Excellent product protection
- Foldable, allows a volume reduction of up to 80 %
- 50 % lighter than mesh boxes
- Available with system cover



Multi-Box MB800

Item no.:	MB-12080
External dimensions:	1,200 x 800 x 925 mm (L x W x H)
Internal dimensions:	1,160 x 760 x 780 mm (L x W x H)
Version:	entirely closed
Material:	PP (ring)
Colour:	grey (ring)
Options:	carrier pallet selectable from the Multi-Line series various ring heights available ring with unloading flap on the long side available with system cover corrosion-free steel bars in the pallet deck (2, 3 or 4 pieces) RFID transponder

80 % volume
reducible



MEDIUM PALLETS

MULTI-BOXES



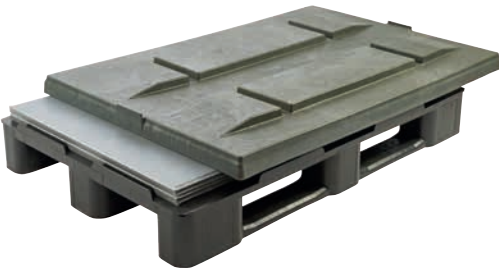
Intech Multi-Boxes are perfectly tailored to the needs of the modern circular economy:

- Cover and pallet are made of recycled plastic
- The entire system is 100 % recyclable at the end of its service life
- Significant reduction of CO₂ emissions in the supply chain



Multi-Box MB1000

Item no.:	MB-120100
External dimensions:	1,200 x 1,000 x 925 mm (L x W x H)
Internal dimensions:	1,160 x 960 x 780 mm (L x W x H)
Version:	entirely closed
Material:	PP (ring)
Colour:	grey (ring)
Options:	carrier pallet selectable from the Multi-Line series various ring heights available ring with unloading flap on the long side available with system cover corrosion-free steel bars in the pallet deck (2, 3 or 4 pieces) RFID transponder



MEDIUM PALLETS

MEDIUM PALLET SERIES MULTI-LINE VERSIONS AND LOAD CAPACITIES

MEDIUM PALLETS

One pallet, limitless possibilities ...



	Multi-Line version	Pallet deck	Material	Runners piece	Steel bars piece	Unit weight kg	Load capacity static kg	Load capacity dynamic kg	Load capacity high rack [2 crossbars] kg
ML800 1,200 x 800 mm	ML800	open	regranulate	3	without	11.0	5,000	1,300	550
	ML800	open	virgin	3	without	11.0	5,500	1,350	600
	ML800 S2	open	regranulate	3	2	12.4	6,000	1,400	800
	ML800 S2	open	virgin	3	2	12.4	6,500	1,450	850
	ML800 S3	open	regranulate	3	3	13.0	7,000	1,500	1,000
	ML800 S3	open	virgin	3	3	13.0	7,500	1,550	1,050
	ML800 S4	open	regranulate	3	4	13.7	7,000	1,600	1,300
	ML800 S4	open	virgin	3	4	13.7	7,500	1,650	1,350
	ML800GD 2K	closed	regranulate	2	without	12.5	5,000	1,300	550
	ML800GD 2K	closed	virgin	2	without	12.5	5,500	1,350	600
	ML800GD 3K	closed	regranulate	3	without	13.8	6,000	1,500	650
	ML800GD 3K	closed	virgin	3	without	13.8	6,500	1,550	700
	ML800GD S2	closed	regranulate	3	2	15.2	7,000	1,600	900
	ML800GD S2	closed	virgin	3	2	15.2	7,500	1,650	950

ML1000 1,200 x 1,000 mm	ML1000	open	regranulate	3	without	12.8	5,000	1,300	550
	ML1000	open	virgin	3	without	12.8	5,500	1,350	600
	ML1000 S2	open	regranulate	3	2	14.2	6,000	1,400	800
	ML1000 S2	open	virgin	3	2	14.2	6,500	1,450	850
	ML1000 S3	open	regranulate	3	3	14.8	7,000	1,500	1,000
	ML1000 S3	open	virgin	3	3	14.8	7,500	1,550	1,050
	ML1000 S4	open	regranulate	3	4	15.5	7,000	1,600	1,300
	ML1000 S4	open	virgin	3	4	15.5	7,500	1,650	1,350
	ML1000GD 2K	closed	regranulate	2	without	14.2	5,000	1,300	550
	ML1000GD 2K	closed	virgin	2	without	14.2	5,500	1,350	600
	ML1000GD 3K	closed	regranulate	3	without	15.5	6,000	1,500	650
	ML1000GD 3K	closed	virgin	3	without	15.5	6,500	1,550	700
	ML1000GD S2	closed	regranulate	3	2	16.9	7,000	1,600	900
	ML1000GD S2	closed	virgin	3	2	16.9	7,500	1,650	950



rubber blocks for anti-slipping, short (31 mm) rubber blocks for anti-slipping, long (46 mm) material TPE	Unit weight per piece	ML800 up to 14 pieces	ML1000 up to 28 pieces
	6 g	8	16
	7 g	6	12



Steel bars suitable for all Multi-Line versions 1,158 mm x 20 mm x 10 mm	Unit weight per piece	ML800	ML1000
	680 g	2, 3 or 4 pieces	2, 3 or 4 pieces



Plug-in runners (form third runners)	Unit weight per piece	ML800GD	ML1000GD
	650 g	2 pieces	2 pieces

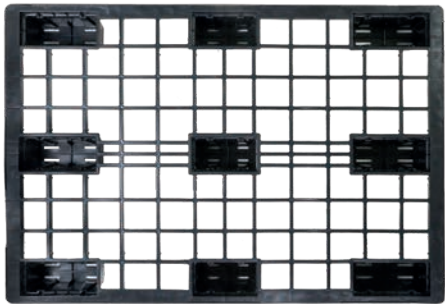
LIGHT PALLETS

LIGHT PALLET SERIES ECO

Intech light pallets stand out for their low unit weight. They impress, however, by offering a high load capacity and are an outstanding choice for export applications.

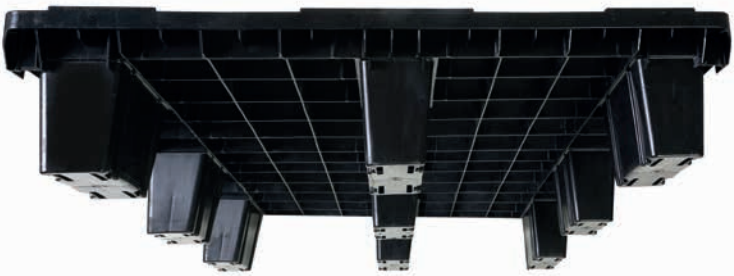
The light pallets can be stacked one inside the other (nestable) to save space – up to 2,356 pallets per truck are possible. When we attach click-runners the Intech light pallets are

even more stable and moreover well prepared for professional block stacking. Furthermore, the light pallets with click-runners are ready for utilization in modern high racks.



LIGHT PALLETS

LIGHT PALLET SERIES ECO



Light pallet IT800GD ECO

Item no.:	EP-GD-12080-10-ECO
External dimensions:	1,200 x 800 x 153 mm (L x W x H)
Load capacity:	1,200 kg dynamic / 2,500 kg static
Version:	9 feet (nestable), closed deck
Temperature range:	-40 °C to +70 °C
Unit weight:	5.7 kg
Material:	HD-PE regranulate
Colour:	black
Options:	with or without safety rims, click-runners available



Light pallet IT1000GD ECO

Item no.:	EP-GD-120100-10-ECO
External dimensions:	1,200 x 1,000 x 153 mm (L x W x H)
Load capacity:	1,200 kg dynamic / 2,500 kg static
Version:	9 feet (nestable), closed deck
Temperature range:	-40 °C to +70 °C
Unit weight:	7.3 kg
Material:	HD-PE regranulate
Colour:	black
Options:	with or without safety rims, click-runners available



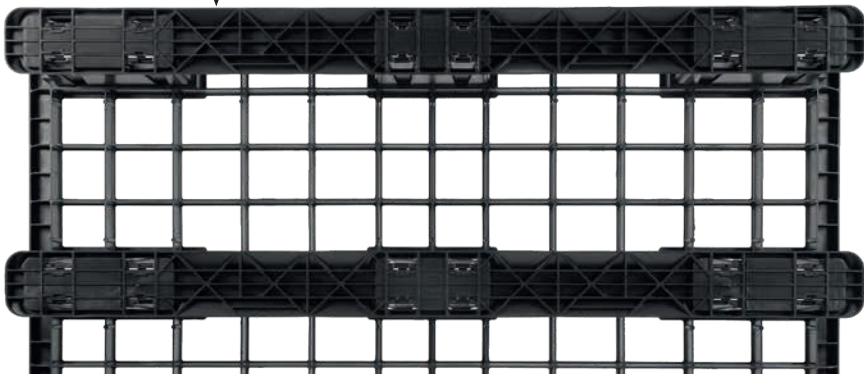
Light pallet IT800 ECO

Item no.:	EP-OD-12080-10-ECO
External dimensions:	1,200 x 800 x 153 mm (L x W x H)
Load capacity:	1,000 kg dynamic / 2,500 kg static
Version:	9 feet (nestable), open deck
Temperature range:	-40 °C to +70 °C
Unit weight:	4.5 kg
Material:	HD-PE regranulate
Colour:	black or <u>grey</u>
Options:	with or without safety rims, click-runners available



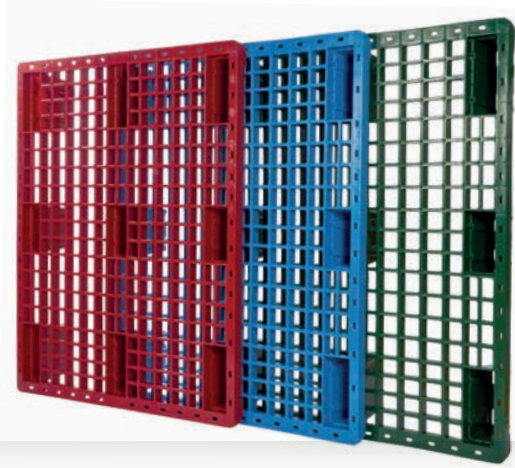
Light pallet IT1000 ECO

Item no.:	EP-OD-120100-10-ECO
External dimensions:	1,200 x 1,000 x 153 mm (L x W x H)
Load capacity:	1,000 kg dynamic / 2,500 kg static
Version:	9 feet (nestable), open deck
Temperature range:	-40 °C to +70 °C
Unit weight:	6.0 kg
Material:	HD-PE regranulate
Colour:	black
Options:	with or without safety rims, click-runners available



LIGHT PALLETS

LIGHT PALLET SERIES STANDARD



Light pallet IT800GD STANDARD

Item no.:	EP-GD-12080-10-STANDARD
External dimensions:	1,200 x 800 x 153 mm (L x W x H)
Load capacity:	1,300 kg dynamic / 2,500 kg static
Version:	9 feet (nestable), closed deck
Temperature range:	-40 °C to +70 °C
Unit weight:	6.2 kg
Material:	HD-PE regranulate
Colour:	black
Options:	with or without safety rims, click-runners available



Light pallet IT800 STANDARD

Item no.:	EP-OD-12080-10-STANDARD
External dimensions:	1,200 x 800 x 153 mm (L x W x H)
Load capacity:	1,100 kg dynamic / 2,500 kg static
Version:	9 feet (nestable), open deck
Temperature range:	-40 °C to +70 °C
Unit weight:	5.0 kg
Material:	HD-PE regranulate
Colour:	black
Options:	with or without safety rims, click-runners available



LIGHT PALLETS

LIGHT PALLET SERIES STANDARD



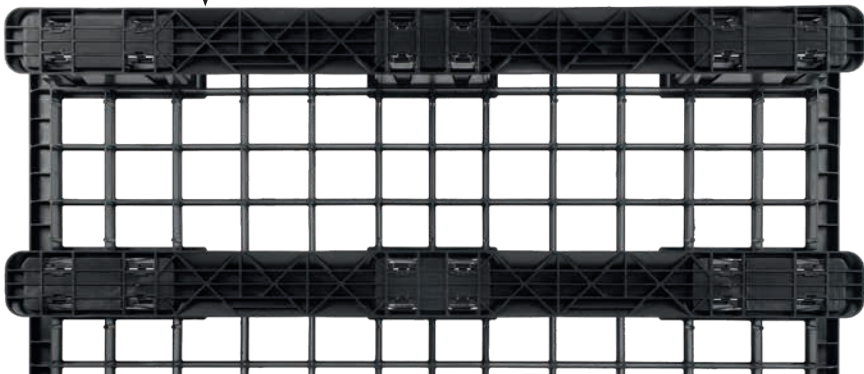
Light pallet IT1000GD STANDARD

Item no.:	EP-GD-120100-10-STANDARD
External dimensions:	1,200 x 1,000 x 153 mm (L x W x H)
Load capacity:	1,300 kg dynamic / 2,500 kg static
Version:	9 feet (nestable), closed deck
Temperature range:	-40 °C to +70 °C
Unit weight:	7.8 kg
Material:	HD-PE regranulate
Colour:	black
Options:	with or without safety rims, click-runners available



Light pallet IT1000 STANDARD

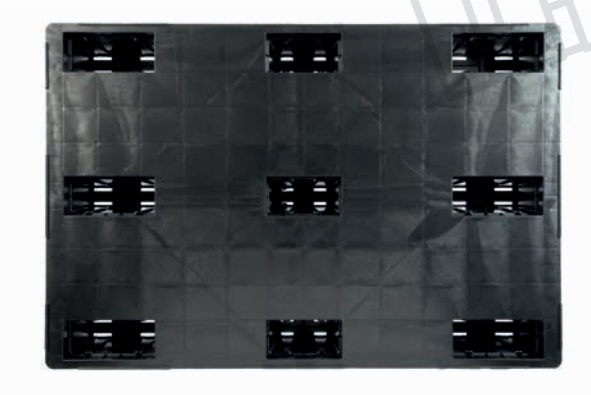
Item no.:	EP-OD-120100-10-STANDARD
External dimensions:	1,200 x 1,000 x 153 mm (L x W x H)
Load capacity:	1,100 kg dynamic / 2,500 kg static
Version:	9 feet (nestable), open deck
Temperature range:	-40 °C to +70 °C
Unit weight:	6.5 kg
Material:	HD-PE regranulate
Colour:	black
Options:	with or without safety rims, click-runners available



LIGHT PALLETS

LIGHT PALLET SERIES PLUS

The Intech PLUS series – our popular light pallets with an even higher load capacity and increased unit weight.



Light pallet IT800GD PLUS

Item no.:	EP-GD-12080-10-PLUS
External dimensions:	1,200 x 800 x 153 mm (L x W x H)
Load capacity:	1,400 kg dynamic / 2,500 kg static
Version:	9 feet (nestable), closed deck
Temperature range:	-40 °C to +70 °C
Unit weight:	7.0 kg
Material:	HD-PE regranulate
Colour:	black
Options:	with or without safety rims, click-runners available

Light pallet IT800 PLUS

Item no.:	EP-OD-12080-10-PLUS
External dimensions:	1,200 x 800 x 153 mm (L x W x H)
Load capacity:	1,200 kg dynamic / 2,500 kg static
Version:	9 feet (nestable), open deck
Temperature range:	-40 °C to +70 °C
Unit weight:	5.9 kg
Material:	HD-PE regranulate
Colour:	black
Options:	with or without safety rims, click-runners available

LIGHT PALLET EQUIPMENT

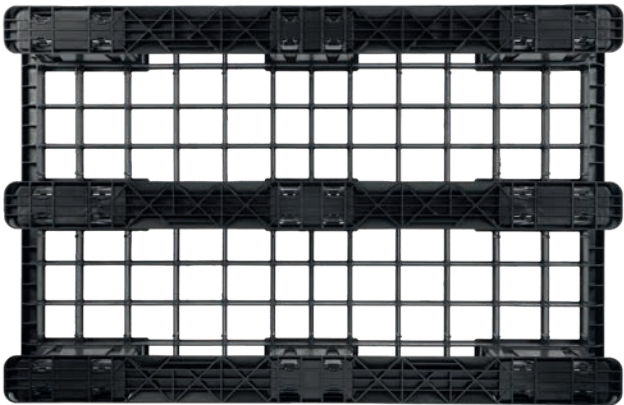
CLICK-RUNNERS

The Intech light pallets can optionally be equipped with clip-pable runners. The Intech click-runners are matching for all Intech models and can be removed without damage after use. With click-runners the Intech light pallets are even more stable and moreover well prepared for professional block stacking. Furthermore, the light pallets are ready for utilization in modern high racks.



Click-runner (clippable runner for Intech light pallets)

Item no.:	EP-KK-10
External dimensions:	1,177 x 92 x 26 mm (L x W x H)
Temperature range:	-40 °C to +70 °C
Unit weight:	0.43 kg
Material:	HD-PE regranulate
Colour:	black



LIGHT PALLETS

HALF PALLETS

The innovative Intech half pallets impress with their robust construction and deep nestability in the stack.

Space-saving and durable, the IT600 formats maximize supply chain efficiency and minimize storage costs.



LIGHT PALLETS

HALF PALLETS

Tailored to your needs:

- Space-saving thanks to the deep nestability in the stack (36 mm)
- Anti-slip edge (without or 5 mm)
- produced from 100 % recycled plastic (PCR)
- with 6 or 9 feet, for use as a 2- or 4-way-pallet

NEW

Half Pallet IT600 6F

Item no.:	EP-OD-8060-10-6F
External dimensions:	800 x 600 x 130 mm (L x W x H)
Load capacity:	500 kg dynamic / 1,300 kg static
Version:	6 feet (nestable), open deck, 4-way
Temperature range:	-40 °C bis +70 °C
Unit weight:	2.6 kg
Material:	HD-PE regranulate
Colour:	black
Options:	with or without safety rims, 9 feet



Half Pallet IT600 9F

Item no.:	EP-OD-8060-10-9F
External dimensions:	800 x 600 x 130 mm (L x W x H)
Load capacity:	600 kg dynamic / 1,400 kg static
Version:	9 feet (nestable), open deck, 2-way
Temperature range:	-40 °C bis +70 °C
Unit weight:	2.9 kg
Material:	HD-PE regranulate
Colour:	black
Options:	with or without safety rims, 6 feet

NEW



LIGHT PALLETS

PLASTIC PALLETS vs. WOODEN PALLETS

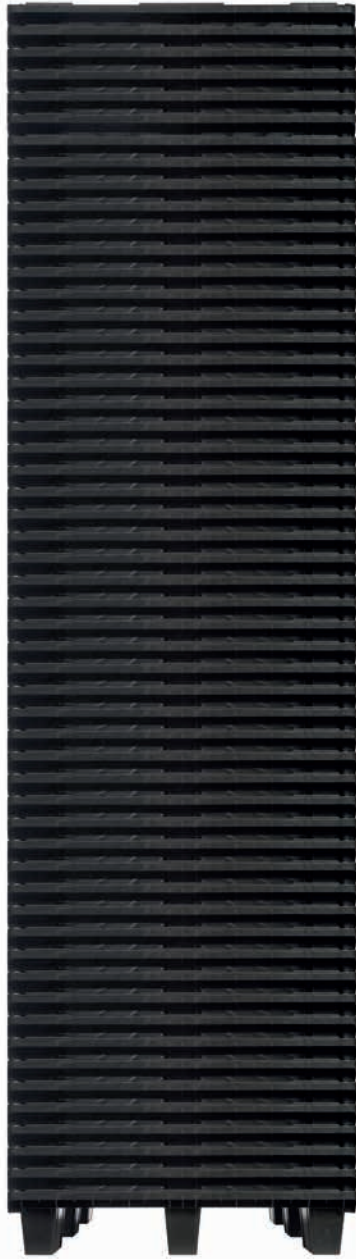
15 Euro pallets
Corresponds to a
height of 2.16 m



50 light pallets per stack
Corresponds to a
height of 2.15 m



55 light pallets per stack
Corresponds to a
height of 2.37 m



LIGHT PALLETS

3 m

62 light pallets per stack
Corresponds to a
height of 2.84 m



Contrary to common assumptions, plastic pallets achieve better results than their wooden counterparts from an ecological standpoint. The difference is even more clear if we compare our reusable containers with disposable packaging.

Thanks to the significantly longer service life of plastic pallets and reusable containers, they do not need to be replaced as often. This positive circumstance as well as the possibility to reduce the volume of these transport packaging (folding, collapsing & nesting) means fewer transports. In addition, it can be recycled more easily and is lighter weight. **All of these factors help significantly reduce emissions.**



OUR PORTFOLIO FOR THE MEAT INDUSTRY

Our largest customer base comes from the meat industry.

We deliver all types of transportation packaging commonly used in this industry – quickly and reliably.

With pallets and crates from Intech, you can transport and store meat and sausage products with the highest hygienic standards.

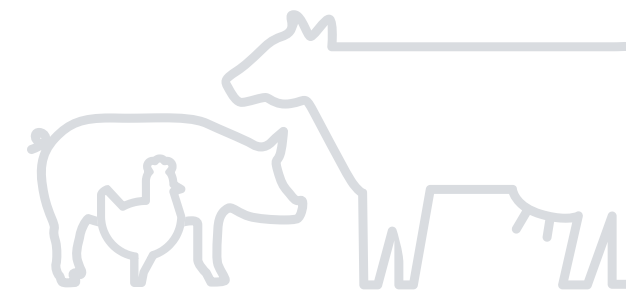
Our transport packaging items are manufactured from food-safe plastics, easy to clean, extremely durable and complies with DIN 55423.

We meet the European guidelines for packaging as well as all hygienic requirements of the meat and food industry.



MEAT

FOOD CONTAINERS



EURO meat container E1 (corresponds to DIN 55423-1 / DIN 55423-2)

Item no.:	FK-E1-4612
External dimensions:	600 x 400 x 125 mm (L x W x H)
Internal dimensions:	570 x 373 x 120 mm (L x W x H)
Version:	bottom/sides closed, open handles
Unit weight:	1,500 g
Volume:	25 liter
Material:	HD-PE
Colour:	your choice of colour
Options:	cover and mounting clip available



EURO meat container E2 (corresponds to DIN 55423-1 / DIN 55423-2)

Item no.:	FK-E2-4620
External dimensions:	600 x 400 x 200 mm (L x W x H)
Internal dimensions:	570 x 373 x 195 mm (L x W x H)
Version:	bottom/sides closed, open handles
Unit weight:	2,000 g
Volume:	40 liter
Material:	HD-PE
Colour:	your choice of colour
Options:	cover and mounting clip available



EURO meat container E3 (corresponds to DIN 55423-1 / DIN 55423-2)

Item no.:	FK-E3-4630
External dimensions:	600 x 400 x 300 mm (L x W x H)
Internal dimensions:	570 x 373 x 295 mm (L x W x H)
Version:	bottom/sides closed, open handles
Unit weight:	3,000 g
Volume:	60 liter
Material:	HD-PE
Colour:	your choice of colour
Options:	cover and mounting clip available



ergonomic handles



MEAT

POULTRY CRATE

The Intech poultry crate is optimal for transportation and storage of poultry and other meat products. This item is manufactured from food-safe HD-PE, particularly hygienic and easy to clean.

The poultry crate is designed to be stackable one inside the other. The volume can be reduced by simply turning the container. If you rotate the upper container in a stack by

180 degrees, it slides into the container below and the volume is reduced by 51 %. This is space-saving, and we can load up to 5,928 empty crates per truck.

The Intech poultry crate with perforated bottom and sides is the right choice specifically for meat products that need to be well-ventilated.



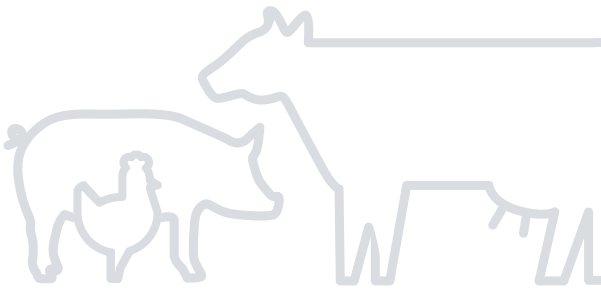
- Poultry crate – **Your benefits**
- Optimal perforations for ventilation of fresh foods
 - Space-saving thanks to a high-volume reduction of 51 %
 - Stable sides, suitable for high loads when stacked
 - Stackable and nestable
 - Simple handling
 - High-quality food safe plastic – 100 % recyclable

Poultry crate

Item no.:	GK-4615-PE
External dimensions:	600 x 400 x 150 mm (L x W x H)
Internal dimensions:	top: 558 x 360 x 139 mm (L x W x H) bottom: 541 x 344 mm (conical) (L x W x H)
Stack height:	140 / 68 mm (51 % volume reducible)
Version:	perforated bottom and sides
Unit weight:	1,500 g
Volume:	27 liter
Material:	HD-PE
Colour:	your choice of colour



51 % volume reducible



MEAT

VOLUME BOXES

- Dimensionally stable and impact-resistant
- High-quality food safe plastic – 100 % recyclable
- Smooth bottom and sides allow easy cleaning
- Resistant against most acids and bases
- Stackable
- Resistant against infrared and ultraviolet rays



Big Box 4 feet

Item no.:	HW-BB-4F-120100
External dimensions:	1,200 x 1,000 x 760 mm (L x W x H)
Internal dimensions:	1,120 x 920 x 600 mm (L x W x H)
Version:	entirely closed, with 4 feet
Unit weight:	32.0 kg
Volume:	610 liter
Material:	HD-PE
Colour:	your choice of colour
Options:	cover available perforated bottom and sides closed bottom and perforated sides



Big Box 3 runners

Item no.:	HW-BB-3K-120100
External dimensions:	1,200 x 1,000 x 760 mm (L x W x H)
Internal dimensions:	1,120 x 920 x 600 mm (L x W x H)
Version:	entirely closed, with 3 runners
Unit weight:	37.0 kg
Volume:	610 liter
Material:	HD-PE
Colour:	your choice of colour
Options:	cover available perforated bottom and sides closed bottom and perforated sides





Modern E Performance containers impress thanks to their reinforced design. This helps to ensure that the containers can be frictionless used on conveyor systems and in automated container warehouses. E Performance containers are compatible with the commonly used EURO meat containers and have the same unit weight. Thanks to the specialized in-mould process used, the label applied on all four sides is almost indestructible, allowing the container to easily be identified with the help of a standard scanner.

Performance container E1 (merchandise)

External dimensions:	600 x 400 x 125 mm (L x W x H)
Internal dimensions:	570 x 373 x 120 mm (L x W x H)
Version:	closed, in mould label four-sided
Unit weight:	1,500 g
Volume:	25 liter
Material:	HD-PE
Colour:	light blue
Options:	cover and mounting clip available

Performance container E2 (merchandise)

External dimensions:	600 x 400 x 200 mm (L x W x H)
Internal dimensions:	570 x 373 x 195 mm (L x W x H)
Version:	closed, in mould label four-sided
Unit weight:	2,000 g
Volume:	40 liter
Material:	HD-PE
Colour:	light blue
Options:	cover and mounting clip available

Performance container E3 (merchandise)

External dimensions:	600 x 400 x 300 mm (L x W x H)
Internal dimensions:	570 x 373 x 295 mm (L x W x H)
Version:	closed, in mould label four-sided
Unit weight:	3,000 g
Volume:	60 liter
Material:	HD-PE
Colour:	light blue
Options:	cover and mounting clip available



The Intech brewing container for very high temperature ranges.

- Manufactured from high-quality PP material
- Temperature resistant from -20 °C to +120 °C (short-term during the washing or brewing process)
- Resistant to acids, bases, water, alcohol, oil, and gasoline

Brewing container

Item no.:	BK-4615-PP
External dimensions:	600 x 400 x 150 mm (L x W x H)
Internal dimensions:	570 x 370 x 135 mm (L x W x H)
Unit weight:	1,300 g
Volume:	28 liter
Material:	PP
Colour:	your choice of colour



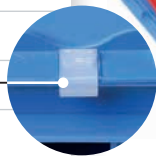
Euro cover 400 x 300 mm

Item no.:	AD-43
External dimensions:	400 x 300 x 25 mm (L x W x H)
Unit weight:	300 g
Material:	PP
Colour:	grey
Options:	with mounting clip



Euro cover 600 x 400 mm

Item no.:	AD-46
External dimensions:	600 x 400 x 25 mm (L x W x H)
Unit weight:	600 g
Material:	PP
Colour:	traffic grey, traffic red, brilliant blue
Options:	with mounting clip



OUR PORTFOLIO FOR THE BAKING INDUSTRY

We guarantee the high-quality requirements of the baking industry in accordance with DIN ISO 9001.

Items manufactured for direct contact with foods are designated with the „glass and fork symbol“.

Intech bakery baskets comply with the current EU regulations no. 10/2011 and no. 1935/2004 as well as the IFS standard.



Bakery basket 9 cm

Item no.:	BK-4609
External dimensions:	600 x 400 x 90 mm (L x W x H)
Internal dimensions:	570 x 370 x 75 mm (L x W x H)
Version:	perforated bottom and sides, open handles
Unit weight:	900 g
Volume:	15 liter
Material:	HD-PE or PP
Colour:	your choice of colour

Bakery basket MEDIUM / HEAVY 15 cm

Item no.:	BK-4615
External dimensions:	600 x 400 x 150 mm (L x W x H)
Internal dimensions:	570 x 370 x 135 mm (L x W x H)
Version:	perforated bottom, sides completely open or partially closed, open handles
Unit weight:	1,300 g MEDIUM / 1,520 g HEAVY
Volume:	28 liter
Material:	HD-PE or PP
Colour:	your choice of colour

BAKED GOODS

BAKERY BASKETS

- Manufactured from high-quality PP or HD-PE material
- PP material temperature resistant from -20 °C to +120 °C (short-term during the washing or pasteurization process)
- HD-PE material temperature resistant from -40 °C to +70 °C
- Resistant to acids, bases, water, alcohol, oil, and gasoline



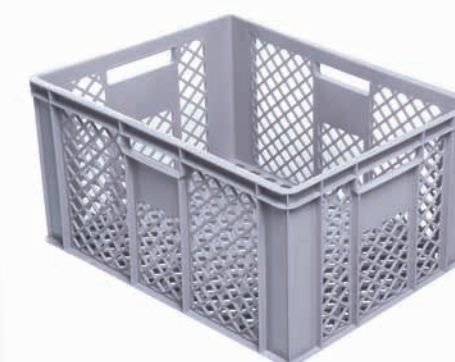
Bakery basket 23 cm

Item no.:	BK-4623
External dimensions:	600 x 400 x 230 mm (L x W x H)
Internal dimensions:	570 x 370 x 215 mm (L x W x H)
Version:	perforated bottom and sides, open handles
Unit weight:	1,700 g
Volume:	45 liter
Material:	HD-PE or PP
Colour:	your choice of colour



Bakery basket 32 cm

Item no.:	BK-4632
External dimensions:	600 x 400 x 320 mm (L x W x H)
Internal dimensions:	570 x 370 x 305 mm (L x W x H)
Version:	perforated bottom and sides, open handles
Unit weight:	2,100 g
Volume:	64 liter
Material:	HD-PE or PP
Colour:	your choice of colour



Bakery basket 41 cm

Item no.:	BK-4641
External dimensions:	600 x 400 x 410 mm (L x W x H)
Internal dimensions:	570 x 370 x 395 mm (L x W x H)
Version:	perforated bottom and sides, open handles
Unit weight:	2,500 g
Volume:	83 liter
Material:	HD-PE or PP
Colour:	your choice of colour



AGRICULTURE

AGRICULTURAL CONTAINERS

Our product range for the agricultural sector includes reusable containers for fruits and vegetables, as well as plant crates for tree nurseries, garden centers, and bulb processors. Fruit and vegetable containers from Intech fulfill the highest hygiene standards, have smooth and easy to clean surfaces, are suitable for automatic washing systems, and retain very little residual moisture after washing.



AGRICULTURE

AGRICULTURAL CONTAINERS



85 % volume reducible

Asparagus crate

Item no.:	DB-3423
External dimensions:	430 x 350 x 230 mm (L x W x H)
Internal dimensions:	top: 355 x 315 x 225 mm (L x W x H) bottom: 325 x 280 mm (conical) (L x W x H)
Version:	bottom and sides closed
Unit weight:	600 g
Volume:	20 liter
Material:	PP
Colour:	your choice of colour
Options:	cover available with or without perforation in the bottom

Lily crate

Item no.:	LK-4622-10-R
External dimensions:	600 x 400 x 240 mm (L x W x H)
Internal dimensions:	566 x 367 x 224 mm (L x W x H)
Version:	perforated bottom and sides
Unit weight:	1,650 g
Volume:	46 liter
Material:	HD-PE reggranulate
Colour:	your choice of colour

reinforced handles



Cover for asparagus crate

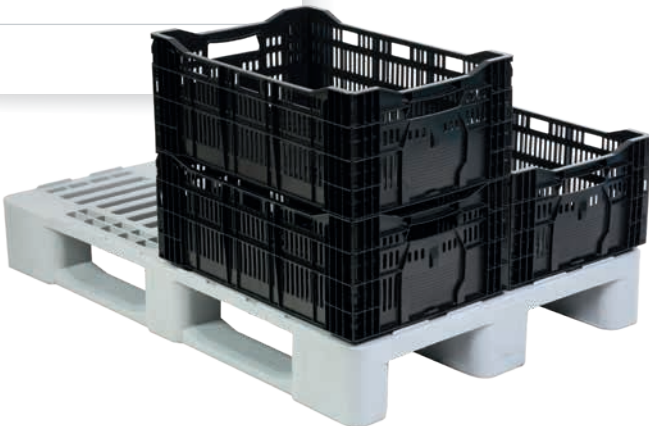
Item no.:	DB-3403
External dimensions:	430 x 350 x 25 mm (L x W x H)
Unit weight:	230 g
Material:	PP

Big Box fruits and vegetables

External dimensions:	1,200 x 1,000 x 760 mm (L x W x H)
Internal dimensions:	1,120 x 920 x 600 mm (L x W x H)
Version:	perforated bottom and sides closed bottom and perforated sides
Unit weight:	37.0 kg with 3 runners, 33.0 kg with 4 feet
Volume:	610 liter
Underframe:	3 runners or 4 feet
Material:	HD-PE
Colour:	your choice of colour
Options:	cover available



85 % volume reducible





COLLAPSIBLE CONTAINER SERIES GREEN-LINE

The collapsible containers in the Green-Line series were specially developed for the requirements of fresh food logistics. The empty containers are collapsible, and the volume can be reduced of 87 %. This means that the Green-Line series save a lot of space and costs during the transport as well as in storage.

The perforated surfaces are particularly smooth, without sharp edges. This ensures that fruits and vegetables are not damaged during transportation.



Collapsible container series Green-Line – **Your benefits**

- In-Mould-Label (IML) for high-quality, permanent labeling
- Optimal perforations for ventilation of fruits & vegetables
- Space-saving thanks to a volume reduction of 87 % (collapsed height 30 mm)
- Especially smooth surfaces to protect the goods
- Integrated label holders on both short sides
- With grooves to fix straps
- Integrated hooks for attaching cling films



Collapsible container Green-Line GL6413 Optimum

Item no.:	GL-6413
External dimensions:	600 x 400 x 126 mm (L x W x H)
Internal dimensions:	570 x 380 x 120 mm (L x W x H)
Version:	perforated bottom and sides
Unit weight:	1,385 g
Volume:	26 liter
Material:	HD-PE or PP
Options:	In-Mould-Label (IML) two sided



COLLAPSIBLE CONTAINER SERIES GREEN-LINE



87 % volume reducible



Collapsible container Green-Line GL6418 Optimum

Item no.:	GL-6418
External dimensions:	600 x 400 x 180 mm (L x W x H)
Internal dimensions:	570 x 380 x 170 mm (L x W x H)
Version:	perforated bottom and sides
Unit weight:	1,650 g
Volume:	37 liter
Material:	HD-PE or PP
Options:	In-Mould-Label (IML) two sided



Collapsible container Green-Line GL6423 Optimum

Item no.:	GL-6423
External dimensions:	600 x 400 x 225 mm (L x W x H)
Internal dimensions:	570 x 380 x 215 mm (L x W x H)
Version:	perforated bottom and sides
Unit weight:	1,900 g
Volume:	47 liter
Material:	HD-PE or PP
Options:	In-Mould-Label (IML) two sided





INDUSTRIAL CONTAINER SERIES

Our industrial container series is a 100 % resource-saving product, with 100 % Intech quality. We produce this high-quality Euro standard series for the food and non-food sectors, in a highly flexible range of designs. Different bottom options and open or closed handles allow them to be used in almost any application.

- Storage and transportation containers made of HD-PE or PP plastic (REACH compliant)
- Modular stacking capability
- Extremely stable and durable
- Cover and different versions available



Industrial container 600 x 400 mm ■ Facelift follows

External dimensions:	600 x 400 x 170 / 250 / 290 / 330 mm
Internal dimensions:	560 x 360 x 160 / 240 / 280 / 320 mm
Version:	open or closed handles closed or perforated bottom
Unit weight:	1,640 / 2,060 / 2,280 / 2,520 g
Volume:	32 / 48 / 56 / 67 liter
Material:	HD-PE or PP
Colour:	your choice of colour
Options:	cover and mounting clip available



Industrial container 400 x 300 mm ■ Facelift follows

External dimensions:	400 x 300 x 130 / 190 / 230 / 270 / 310 mm
Internal dimensions:	365 x 265 x 120 / 180 / 220 / 260 / 300 mm
Version:	open or closed handles closed or perforated bottom
Unit weight:	830 / 970 / 1,140 / 1,230 / 1,360 g
Volume:	12 / 17 / 21 / 25 / 29 liter
Material:	HD-PE or PP
Colour:	your choice of colour
Options:	cover and mounting clip available



We deliver a wide range of equipment for our containers, such as covers, trolleys, glass inserts and compartment inserts, as well as suitable label holders. Our aim is to develop a perfect custom-tailored solution together with our clients.

Compartment inserts

External dimensions:	600 x 400 or 400 x 300 mm (L x W)
Version:	individual compartment division
Material:	PE or PETG
Colour:	black or grey



We customize compartment divisions to individual customer requirements. Choose plastic compartment inserts for efficient, protective, and clean storage, optimal picking processes and secure transport of goods and products. Our partition systems are simple to use, easy to clean, and the ideal addition to your existing warehouse system.

Trolley 600 x 400 mm

Item no.:	RW-46
External dimensions:	600 x 400 mm (L x W)
Version:	closed or perforated bottom
Material:	frame made of ABS
Colour:	your choice of colour
Options:	different wheel variants



Standard Euro size containers can be moved easily and safely with our practical trolleys, even without using industrial trucks.

Intech trolleys – Your benefits

- With fixed or swivel castors
- Suitable for transporting heavy loads up to 300 kg
- Polypropylene wheels
- Silent rubber wheels
- Closed or perforated frame





FOLDING BOXES

Intech folding boxes are suitable as a transport medium in your logistics process, for in-store presentations, or in classic resale. Our folding boxes are robust and durable, with an appealing design and variety of colours.



77 % volume reducible

Folding box 41 L

Item no.:	FB-41L
External dimensions:	525 x 355 x 265 mm, folded 60 mm (L x W x H)
Internal dimensions:	495 x 325 x 255 mm (L x W x H)
Version:	closed bottom, perforated sides
Unit weight:	1,270 g
Load capacity:	25.0 kg
Volume:	41 liter
Material:	PP
Colour:	your choice of colour



80 % volume reducible

Folding box 55 L

Item no.:	FB-55L
External dimensions:	575 x 380 x 295 mm, folded 60 mm (L x W x H)
Internal dimensions:	545 x 355 x 285 mm (L x W x H)
Version:	closed bottom, perforated sides
Unit weight:	1,470 g
Load capacity:	25.0 kg
Volume:	55 liter
Material:	PP
Colour:	your choice of colour



STORAGE CONTAINER SERIES
STACK & NEST CONTAINER ALLROUNDER

Storage container 600 x 400 mm ■ Facelift follows

External dimensions:	600 x 400 x 170 / 250 / 290 / 330 mm
Internal dimensions:	560 x 360 x 160 / 240 / 280 / 320 mm
Version:	open or closed handles closed or perforated bottom
Unit weight:	1,640 / 2,060 / 2,280 / 2,520 g
Volume:	32 / 48 / 56 / 67 liter
Material:	HD-PE or PP
Colour:	your choice of colour
Options:	cover and mounting clip available



Storage container 400 x 300 mm ■ Facelift follows

External dimensions:	400 x 300 x 130 / 190 / 230 / 270 / 310 mm
Internal dimensions:	365 x 265 x 120 / 180 / 220 / 260 / 300 mm
Version:	open or closed handles closed or perforated bottom
Unit weight:	830 / 970 / 1,140 / 1,230 / 1,360 g
Volume:	12 / 17 / 21 / 25 / 29 liter
Material:	HD-PE or PP
Colour:	your choice of colour
Options:	cover and mounting clip available



Stack & nest container Allrounder

Item no.:	DB-3423
External dimensions:	430 x 350 x 230 mm (L x W x H)
Internal dimensions:	top: 355 x 315 x 225 mm (L x W x H) bottom: 325 x 280 mm (conical) (L x W x H)
Version:	bottom and sides closed
Unit weight:	600 g
Volume:	20 liter
Material:	PP
Colour:	your choice of colour
Options:	cover available

85 % volume reducible



Cover for stack & nest container Allrounder

Item no.:	DB-3403
External dimensions:	430 x 350 x 25 mm (L x W x H)
Unit weight:	230 g
Material:	PP





SHOPPING BASKETS

Intech shopping baskets are extremely lightweight with a weight of just 620 grams but can handle a heavy load capacity thanks to their innovative design and high-quality materials. They can safely transport up to 30 kg. Perfectly suited for retail applications, from grocery stores to construction markets, discounters, or supermarkets. Intech shopping baskets can easily be stacked one inside the other (nestable) to reduce their volume by up to 87 %.

The ergonomic handle folds down and guarantees comfortable shopping over a long period of time, without pressure points or aching hands.

Our shopping baskets are very easy to use, with an attractive design that is resistant to breakage. Furthermore, they are washable and 100 % recyclable.

Intech baskets can be printed on all four sides with customer logos and advertisements.

Customized shopping baskets in an appealing colour with store branding improves the customer shopping experience, adding a high-quality touch to any store.



SHOPPING BASKETS

Intech shopping baskets – **Your benefits**

- 100 % recyclable
- Food-safe and washable
- Volume reduction of 87 % when nested
- High quality and attractive design
- Extremely lightweight, yet stable and resistant to breakage
- Ergonomic and foldable bow handle
- Comfortable to carry, even for a long period of time
- Advertisements and logos can be added to all four sides – perfect advertising space



Shopping basket single handle

Item no.:	EK-4330-EG
External dimensions:	top: 430 x 300 x 225 mm bottom: 330 x 205 mm (conical) (L x W x H)
Internal dimensions:	top: 410 x 275 x 220 mm (L x W x H)
Version:	single handle
Unit weight:	620 g
Load capacity:	30.0 kg
Volume:	22 liter
Material:	PP
Colour basket / handle:	your choice of colour



Shopping basket double handle

Item no.:	EK-4330-DG
External dimensions:	top: 430 x 300 x 225 mm bottom: 330 x 205 mm (conical) (L x W x H)
Internal dimensions:	top: 410 x 275 x 220 mm (L x W x H)
Version:	double handle
Unit weight:	650 g
Load capacity:	30.0 kg
Volume:	22 liter
Material:	PP
Colour basket / handle:	your choice of colour



87 % volume
reducible



BEVERAGES



BOTTLE CRATES

Bottle crates from Intech are a safe transportation and efficient storage option for beverage products.

Our standardized crates are available with customized compartments, depending on bottle content and pack size. They are stable, high-quality, 100 % compatible with all market requirements and therefore ideal for use as reusable deposit crates.

Intech bottle crates have an appealing design and can be printed on all four sides with customer logos and advertisements.

A custom bottle crate, finished in an appealing colour and with custom branding, is the perfect way to present your brand.



BEVERAGES



BOTTLE CRATES

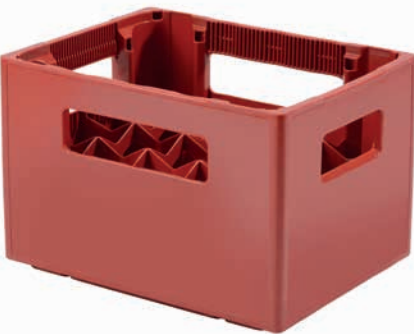
Intech bottle crates – **Your benefits**

- High quality and attractive design
- Suitable as reusable deposit crate
- Advertisements and logos can be added to all four sides – perfect advertising space
- Stable and durable
- Manufactured from high-quality HD-PE
- 100 % recyclable
- Suitable for manual handling and automated conveyor systems
- Ergonomic handles



Bottle crate IT20 S

Item no.:	GK-34265-PE
External dimensions:	400 x 300 x 265 mm (L x W x H)
Internal dimensions:	375 x 285 x 240 mm (L x W x H)
Version:	20 compartments x 0.5 liter wide of compartments 72 mm lamellar handles four-sided
Unit weight:	1,830 g
Material:	HD-PE
Colour:	your choice of colour



Bottle crate IT20 L

Item no.:	GK-3429-PE
External dimensions:	400 x 300 x 290 mm (L x W x H)
Internal dimensions:	370 x 280 x 270 mm (L x W x H)
Version:	20 compartments x 0.5 liter wide of compartments 72 mm lamellar handles four-sided
Unit weight:	1,930 g
Material:	HD-PE
Colour:	your choice of colour

Bottle crate type 1a / 1b*

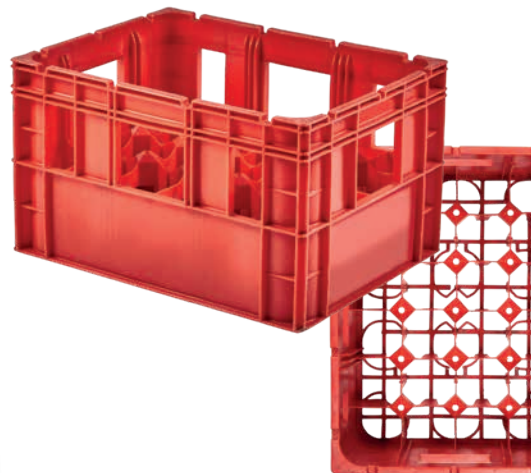
Item no.:	GK-2333
External dimensions:	top: 356 x 275 x 347 mm (L x W x H) bottom: 354 x 273 x 347 mm (L x W x H)
Internal dimensions:	327 x 246 x 335 mm (L x W x H)
Version:	12 compartments x 0.75 liter wide of compartments 83 mm
Unit weight:	1,400 g
Material:	HD-PE
Colour:	brown, light green

*orders via GDB eG, Bonn



Bottle crate IT24

Item no.:	GK-24-PE
External dimensions:	400 x 300 x 230 mm (L x W x H)
Internal dimensions:	371 x 271 x 218 mm (L x W x H)
Version:	24 compartments x 0.33 liter wide of compartments 65 mm 15 pin-partitions
Unit weight:	1,360 g
Material:	HD-PE
Colour:	your choice of colour



THERMOFORMING YOUR PACKAGING IN PERFECT FORM

Our thermoforming department
turns your requirements into the perfect form.

Overview of our services:

- We process ABS, PS, PP, PE, PET, PC, ASA or PMMA sheet materials
- Post-processing with roller presses and CNC milling machines
- Laser engraving available
- We only work with machines from GEIS and ILLIG

The wide range of material types ensures we can offer an extensive range of products:








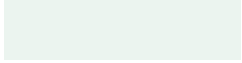

- High-quality optical components - transparent casings, skylights, lamps, advertising covers
- Claddings for vehicle and machine construction
- Transport trays - for careful and economical transport of your workpieces
- Technical parts - complete housings, thermoboxes, etc.
- Protective covers for machines and devices
- Technical moulded parts according to your requirements

We would be happy to develop a custom solution together with you !

COLOURS

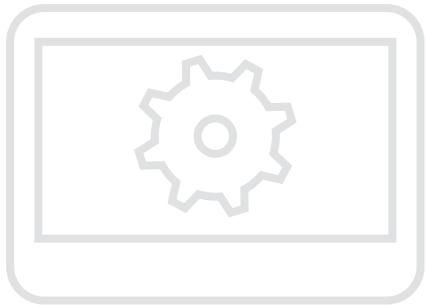
INTECH STANDARD COLOURS

Our containers and pallets are available in many different standard colours.
Upon request, we are happy to fulfill your custom colour preference.

	RAL 3020 traffic red
	RAL 1023 traffic yellow
	RAL 6005 moss green
	RAL 5007 brilliant blue
	RAL 7042 traffic grey
	RAL 9011 graphite black
	RAL 8014 sepia brown
	RAL 9003 signal white
	RAL 7031 blue grey (Bakery baskets)



DEVELOPMENT AND TOOL MAKING



5-axis portal milling machine
from Mikron for manufacturing
precision parts



3-axis portal milling machine
from Trimill for manufacturing
pallet tools



Project solutions and custom designs

Intech's areas of expertise include developing and designing custom-tailored project solutions and custom designs, created by our development department, and implemented alongside our tool making.

We offer a comprehensive range of reusable transport packaging for many different applications. However, some customers have highly specialized transportation and storage needs – this is where our development and tool making experts come into play.

As an experienced producer of reusable transportation packaging, we are very familiar with the different industries and applications, and we know what is most important in developing and designing containers and pallets. All custom products and project solutions are created in our in-house development department. This helps to keep the communication channels short, ensuring project work is always efficient and goal oriented.

The first step

We work with our customers to outline their precise profile of requirements for the transportation packaging in a personal meeting. All product requirements are listed in a technical specification.

Development and construction

Based on the technical specification, our product designers create the first construction drawings. Detailed 3D representations provide the customer with an exact impression of the product throughout every step of development for their transportation packaging.

From model to tool

Intech prototyping is able to rapidly produce a first 3D printed sample. In this process, a plastic model is created layer by layer, which the customer can approve.

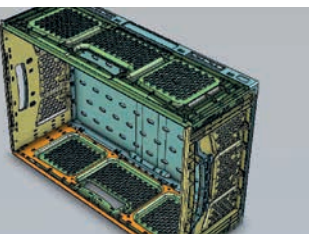
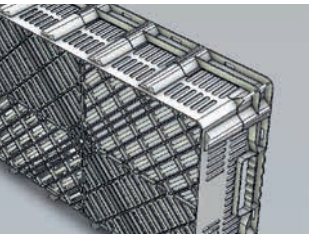
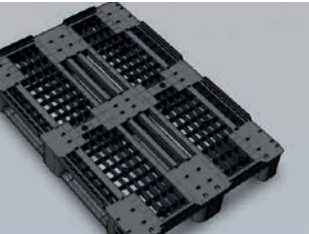
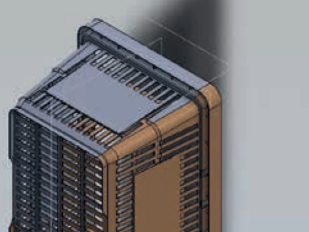
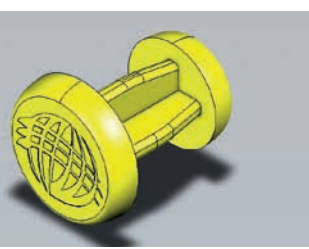
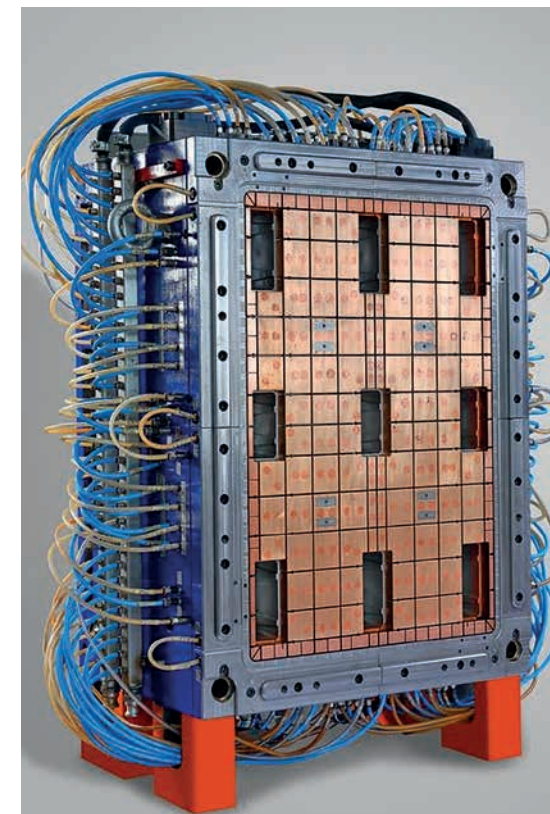
For the serial production in the injection moulding process a new mould getting built, based on the technical drawings, and optimised using mould flow analysis.

Quality test and delivery

After the first serial production, the new transport packaging undergoes precise quality tests in the laboratory at TÜV Hanover. After it has passed all tests and been approved by the customer, the new transport packaging will be delivered.

Our aim is to develop a perfect custom-tailored solution together with our clients.

Yours, the Intech-Team



SERVICE FINISHING AND IDENTIFICATION



FURTHER PROCESSING

Your products are adapted and finished in our modern processing centre, through a flexible, customer-directed process.

Directly after injection moulding or thermoforming, the products go through the following finishing steps as needed:

- Laser processing
- Milling
- Printing & engraving
- Bonding
- Coding
- Drilling
- Sawing
- Punching
- Grinding
- Cutting & welding

LABELING AND PRINTING

We offer a variety of options for custom printing of your containers and pallets:

- Screen printing
- Pad printing
- Laser printing
- Hot stamping with typesetting or motif
- Engraving
- Decorative printing

IN-MOULD-LABEL AND CODING

Already during the production process containers and pallets can be equipped with durable In-Mould-Labels (IML) for clear identification.

Upon request, we are happy to develop custom adhesive labels and apply them directly after production.

The following coding types are available:

- QR code
- RFID
- Barcode
- Colour code

BIOPLASTICS

Bioplastics are plastic materials produced from renewable biomass sources. Such products reduce the use of fossil resources and lower CO₂ emissions.

At Intech, we are aware of our ecological responsibilities, and we offer our customers a variety of sustainable bioplastic solutions.

Cellulose



Wood fibres



RECYCLING

Benefit from our recycling service!

At the end of their service life, we take back containers and pallets, recycle their materials and produce new transport packaging, such as our light pallets. This is an ecological and profitable option for your company.



One call is all it takes – we'll quickly pick up your defective containers and pallets. For further information, see pages 4 and 5.

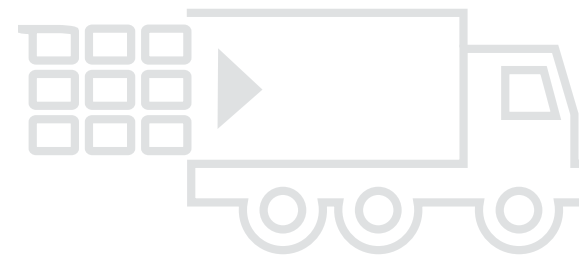


ESD MATERIAL

"Safe from electrostatic charges"

Upon request, we can produce your containers and pallets with ESD additives to prevent static charge.

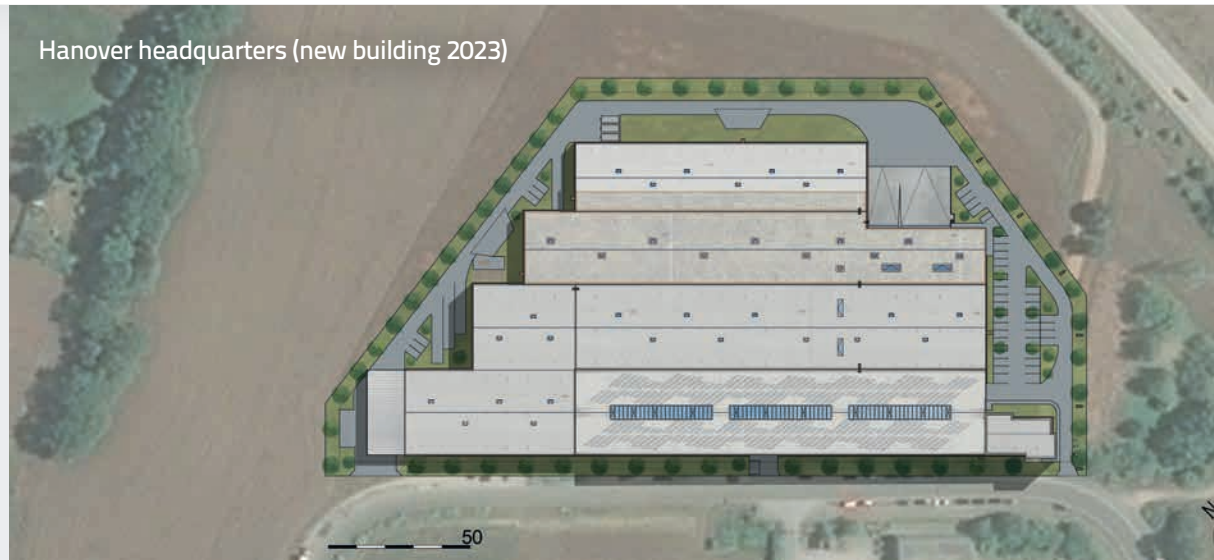




STORAGE AND SHIPPING

SPECIALIST IN SHIPPING FOOD ITEMS

Hanover headquarters (new building 2023)



Hanover headquarters (new building 2023)



Availability and quick delivery are important to us!

We have our own truck fleet and large warehouse spaces – this makes us flexible and always able to deliver. With more than 50,000 pallet spaces in our dry storage, we always keep the Intech products available to our customers.

Travis Logistik GmbH specialises in the shipping of food items and is a wholly owned subsidiary of the Intech Group.

Our main focus is on shipping frozen goods and fresh products.

Our modern fleet and specially trained drivers ensure that the cool chain is uninterrupted.

Our performance:

- 30 modern, truck units, primarily box and refrigerated trailers.
- All refrigerated trailers are equipped with digital temperature recorders.
- All trucks are equipped with modern telematics.
- Large warehouse for storing of food and food additives in Hanover.

Hanover headquarters (new building 2023)





PREMIUM QUALITY
MADE IN GERMANY



Our company has an excellent solvency.
Learn more:
www.creditreform.de/crefozert

VERSATILE AND DIRECT FROM MANUFACTURER

Intech Worldwide GmbH

Desbrocksheidering 28

30419 Hannover

+49-511-979 1000-0

+49-511-979 1000-40

info@intech-world.com

www.intech-world.com



Download Portfolio



Follow us on LinkedIn



INTECH world
wide GmbH